



ESF-8 Situational Report
Date: Monday, October 12, 2009
Organized by: RPrats, State ESF-8

I. The Data
CDC Dashboard of National Statistics
DHH/OPH Dashboard of State Statistics

II. Operations
Summary of Activity for October 4 – October 10, 2009
Anticipated Activity for October 11 – October 17, 2009

III. Planning
Seasonal Flu Vaccine Campaign
H1N1 Vaccine Campaign
-Phase 1: Registration of H1N1 vaccine distribution



CDC Dashboard
National Stats Update
Source: CDC
www.cdc.gov/h1n1flu



H1N1 in U.S.
CDC - Week 38 (Sept 20 - 26, 2009)

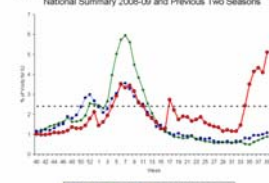
During the week of September 27 - October 3, 2009, a review of the key indicators found that influenza activity increased in the United States. Below is a summary of the most recent key indicators:

- **Visits to doctors** for influenza-like illness (ILI) continued to increase in the United States, and overall, are higher than levels expected for this time of the year.
- Total influenza **hospitalization** rates for laboratory-confirmed influenza are higher than expected for this time of year for adults and children. And for children 5-17 and adults 18-49 years of age, hospitalization rates from April – October 2009 exceed average flu season rates (for October through April).
- The proportion of **deaths** attributed to pneumonia and influenza (P&I) based on the 122 Cities Report has increased and now exceeds what is normally expected at this time of year. In addition, 19 flu-related pediatric deaths were reported this week; 16 of these deaths were confirmed 2009 H1N1 and 3 were unsubtyped influenza A and likely to be 2009 H1N1. A total of 76 laboratory confirmed 2009 H1N1 pediatric deaths have been reported to CDC since April.
- Thirty-seven states are reporting **widespread influenza activity** at this time. They are: Alabama, Alaska, Arizona, Arkansas, California, Colorado, Delaware, Florida, Georgia, Idaho, Illinois, Indiana, Iowa, Kansas, Kentucky, Louisiana, Maryland, Minnesota, Mississippi, Missouri, Nebraska, Nevada, New Hampshire, New Mexico, New York, North Carolina, Ohio, Oklahoma, Oregon, Pennsylvania, South Carolina, South Dakota, Texas, Tennessee, Virginia, Washington, and Wyoming. Any reports of widespread influenza activity in September and October are very unusual.
- Almost all of the influenza **viruses** identified so far are 2009 H1N1 influenza A viruses. These viruses remain similar to the virus chosen for the 2009 H1N1 vaccine, and remain susceptible to the antiviral drugs oseltamivir and zanamivir with rare exception.

Influenza-Associated Outpatient Visits

Outpatient Illness Surveillance:
Nationwide during week 38, 5.1% of patient visits reported through the U.S. Outpatient Influenza-like Illness Surveillance Network (USOINet) were due to influenza-like illness (ILI). This percentage is above the national baseline of 2.4%.

Percentage of Visits for Influenza-like Illness (ILI) Reported by the US Outpatient Influenza-like Illness Surveillance Network (USOINet), National Summary 2008-09 and Previous Two Seasons



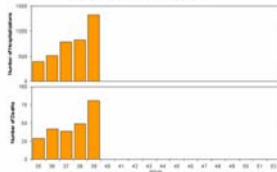
On a regional level, the percentage of outpatient visits for ILI ranged from 1.3% to 9.5%, and increased in eight of the 10 surveillance regions. Eight regions (Regions 3 through 10) reported a proportion of outpatient visits for ILI above region-specific baseline levels, while Regions 1 and 2 reported a percentage of visits for ILI below region-specific baselines.

Influenza-Associated Hospitalizations

Pneumonia and Influenza Hospitalization and Death Tracking:

This new system was implemented on August 30, 2009, and replaces the weekly report of laboratory-confirmed 2009 H1N1-related hospitalizations and deaths that began in April 2009. Jurisdictions can now report to CDC either laboratory-confirmed or pneumonia and influenza syndrome-based counts of hospitalizations and deaths resulting from all types or subtypes of influenza, not just those from 2009 H1N1 influenza virus. To allow jurisdictions to implement the new case definition, counts were reset to zero on August 30, 2009. From August 30 - October 3, 2009, 3,874 laboratory-confirmed influenza-associated hospitalizations, 240 laboratory-confirmed influenza-associated deaths, 12,364 pneumonia and influenza syndrome-based hospitalizations, and 1,544 pneumonia and influenza syndrome-based deaths were reported to CDC. CDC will continue to use its traditional surveillance systems to track the progress of the remainder of the 2008-09 season, and for the 2009-10 influenza season, which officially began October 4, 2009.

Weekly Laboratory-Confirmed Influenza-Associated Hospitalizations and Deaths, National Summary, 2008-09



LA Dashboard

Louisiana Stats Update
Source: OPH Epi
Reports
(See Surveillance Report)

Louisiana Update - Week 38
Sentinel Surveillance Network Summary (Raoult Ratard, MD – Sept 20, 2009 – Sept 26, 2009):

Louisiana Confirmed Cases: 1,472
Louisiana H1N1-Related Deaths: 20

1. The transmission seems to have been slowing down in the past 2 weeks (see page 2).
2. The estimated number of cases is about 100,000. This estimate has a large confidence interval.
3. The data are collected on the confirmed cases, they are 1,472 confirmed cases. Since the collection criteria have not been changed for several weeks, it seems that the confirmation rates are lower. From week 30 to 35 about 70% of lab tests submitted were positive for 2009H1N1. This proportion is now down to 35%.
4. The age group most at risk from acquiring the illness is still 5 to 24. For hospitalization the children less than 5 are also at high risk (see page 3).
5. The proportion of hospitalization and fatalities are within the US range. Asthma and pregnancy are the two leading risk factors.
6. Most regions are now affected.
7. Many US regions are now at widespread influenza.

ILI = influenza like illness



Planning and Operations

DHH Operational Details

Morning:

Battle-Rhythm of Calls (set at M, W, F for Braintrust Group)

- to share latest guidance from CDC
- to adjust response based on surveillance reports and CDC guidance
- identification of activities or response plan(s)

Morning – Afternoon:

- Intelligence gathering – ie. CDC calls, braintrust calls, etc
- Monitoring
- Vaccination Operations Planning

Afternoon – Evening:

Press Releases (afternoon or early evening in time news broadcasts)

DHH Summary of Activities (Oct 4– Oct 10)

1. School Vaccination Plan
OPH Regions are canvassing which schools will require assistance with administration of H1N1 vaccine and those that are self-sufficient. Round 1 of assessments completed by the Regions as of Oct 9th. Strike teams being organized to support overall school vaccine campaign effort.
 2. CDC Disburses LAIV (flu-mist allotment) of 26,000 dosages to LA. Press Conference held on Friday to explain process:
 - Target providers are sent communication of availability/type
 - Target providers send in orders to OPH Immunization Section.
 - Immunization Section sends orders to CDC via VAXMAN software.
 - McKesson (on contract to CDC) drop ships the orders to Target providers.
- Confounding Factors to the Operation:
- Shipping: McKesson drop ships to large volume providers; Immunization section packages/ships to smaller volume providers
 - Planning: Initial allotments do not always match actual allotments (ie. it was initially reported that LA had 26K but actual numbers are not known until actual shipment is made to the target provider).
 - Composition of initial allotments are not always accurate or known (ie. there are five manufacturers licensed to provide adult dosage, child dosage, with/without preservative) which can provide complications for front-end “push-system” to the target providers.
 - Target providers prefer different types of vaccine and will ship back to OPH their vaccine. For instance, although OPH announced that LAIV (flu mist type) was the only type available, the target providers sent it back with a request for injectable type.
3. Pediatric Antivirals – CDC released pediatric Tamiflu to the states. LA to receive allotment on Monday, October 5, 2009. Pediatric antivirals being distributed today, October 12, 2009.
 4. EMSTAT Reporting Hospitals was conducted on Wednesday, Oct 7. The current [reports](#) indicate that approximately 18 percent of the ED visits are related to ILL.

DHH Anticipated Activities (Oct 11 – Oct 17)

1. EMSTAT – Wednesday Report
The U.S. Dept. of Health and Human Services (HHS) is still requiring a Wednesday report on specific usage and bed availability questions. Therefore, the Department of Health and Hospitals (DHH) will use EMSTAT to collect HAVBED federal questions and will use the opportunity to gauge the hospitals' ED surge counts weekly. Hospitals are expected to update both the ILL and the HAVBED reports via EMSTAT on Wednesdays by 10 a.m. A user guide is available on LHA's [website](#). (Asha Smith, asmith@lhaonline.org)
2. Website to add additional feature of “flu-locator” to be available in near future.
3. Continue planning efforts for school vaccination program.



Seasonal Flu Vaccination Plan

SEASONAL FLU PRIORITY GROUPS

The following have been identified as those that should be prioritized to receive the flu vaccination:

- Children aged 6 months--18 years
- All persons aged ≥ 50 years
- Pregnant women, including breastfeeding women
- Other adults at risk for medical complications from influenza.
- All persons who live with or care for persons at high risk for influenza-related complications, including contacts of children aged < 6 months.

13

VACCINATION PRIORITY GROUPS-CONT

- Physicians, nurses, and other workers in both hospital and outpatient-care settings, medical emergency-response workers (e.g., paramedics and emergency medical technicians)
- Employees of nursing home and long-term-care facilities who have contact with patients or residents, and students in these professions who will have contact with patients.

14

SEASONAL FLU VACCINATION TIMELINE

Seasonal Flu
August- December 2009

- Seasonal Influenza Vaccine Availability-
 - Flu Mist (nasal administration) was available in August (private providers only); healthy individuals aged 2-49.
 - Injectable vaccine will be available to the private sector in September in batches.
 - Injectable vaccine will be available to the Louisiana Office of Public Health (OPH) in October
 - Public Health Units – by walk-in appointment
 - Mass Vaccination Events

15

State Cache Distribution: Mass Vaccination Event

- November 13th to November 20th
- 64,000 doses of seasonal influenza vaccine
- Will utilize every public health unit
- Vaccine provided at no cost
- No priority group restrictions on who can receive the vaccine during the MVEs

16

<p>Region 1 Jefferson Parish Health Unit 1855 Ames Blvd. Marrero, LA 70072 (504) 349-8802 Friday November 13th, 2009 10:00 a.m. – 6:00 p.m.</p> <p>Orleans Parish Health Unit 3308 Tulane Avenue New Orleans, LA 70119 (504) 826-2570 Friday November 13th, 2009 10:00 a.m. – 6:00 p.m.</p> <p>St. Bernard Parish Health Unit 2712 Palmisano Blvd. Chalmette, LA 70043 (504) 278-7410 Friday November 13th, 2009 10:00 a.m. – 6:00 p.m.</p> <p>Mike Miley Playground 6716 W Metairie Ave Metairie, LA 70003 (504) 599-0100 (OPH Region 1 Office) Friday November 13th, 2009 10:00 a.m. – 6:00 p.m.</p>	<p>Region 2 Ascension Parish Health Unit 901 Catalpa St. Donaldsonville, LA 70346 (225) 474-2004 Monday November 16th, 2009 9:00 a.m. – 2:00 p.m.</p> <p>East Baton Rouge Parish Health Unit 353 N. 12th St Baton Rouge, LA 70802 (225) 242-4862 Friday November 13th, 2009 9:00 a.m. – 2:00 p.m.</p> <p>East Feliciana Parish Health Unit 12080 Marston St. Clinton, LA 70722 (225) 583-8551 Thursday November 19th, 2009 9:00 a.m. – 2:00 p.m.</p> <p>Iberville Parish Health Unit 24705 Plaza Drive Plaquemine, LA 70764 (225) 687-3021 Tuesday November 17th, 2009 9:00 a.m. – 2:00 p.m.</p>	<p>Pointe Coupee Parish Health Unit 282 B Hospital Rd. New Roads, LA 70760 (225) 638-7320 Monday November 16th, 2009 9:00 a.m. – 2:00 p.m.</p> <p>West Baton Rouge Parish Health Unit 685 Louisiana Ave. Port Allen, LA 70767 (225) 342-7525 Wednesday November 18th, 2009 9:00 a.m. – 2:00 p.m.</p> <p>West Feliciana Parish Health Unit 5154 Burnett Rd. St. Francisville, LA 70775 (225) 635-3644 Thursday November 19th, 2009 9:00 a.m. – 2:00 p.m.</p>
---	--	--

<p>Region 3 Assumption Parish Health Unit 158 Highway 1008 Napoleonville, LA 70390 (985) 369-6031 Friday November 20th, 2009 8:30 a.m. – 3:30 p.m.</p> <p>Lafourche Parish Health Unit 2535 Veterans Blvd. Thibodaux, LA 70301 (985) 447-0921 Thursday November 19th, 2009 8:30 a.m. – 6:00 p.m.</p> <p>Lafourche Parish Health Unit (Galliano) 133 W. 112th St. Cut Off, LA 70345 (985) 632-5567 Friday November 13th, 2009 8:30 a.m. – 3:30 p.m.</p> <p>St. James Parish Health Unit 2471 Louisiana Ave. Lutcher, LA 70071 (225) 869-3005 Friday November 13th, 2009 8:30 a.m. – 3:30 p.m.</p>	<p>St. John Parish Health Unit 473 Central Ave. Reserve, LA 70084 (985) 536-2172 Friday, November 20, 2009 8:30 a.m. – 3:30 p.m.</p> <p>St. Mary Parish Health Unit 1200 David Drive Morgan City, LA 70380 (985) 380-2441 Wednesday November 18th, 2009 8:30 a.m. – 3:30 p.m.</p> <p>Terrebonne Parish Health Unit 600 Polk St. Houma, LA 70360 (985) 857-3601 Thursday November 19th, 2009 8:30 a.m. – 6:00 p.m.</p> <p>St. Charles Community Health Center 843 Milling Avenue Luling, LA 70070 (985) 447-0916 (OPH Region 3 Office) Tuesday November 17th, 2009 8:30 a.m. – 3:30 p.m.</p>	<p>Region 4 Iberia Parish Health Unit 121 W. Pershing St. New Iberia, LA 70560 (337) 373-0021 Thursday November 12th, 2009 9:00 a.m. – 3:00 p.m.</p> <p>Lafayette Parish Health Unit 220 Willow St. Bldg A Lafayette, LA 70501 (337) 262-5616 Monday November 16th, 2009 9:00 a.m. – 3:00 p.m.</p> <p>St. Martin Parish Health Unit 303 W. Port St. St. Martinville, LA 70582 (337) 394-3097 Thursday November 12th, 2009 9:00 a.m. – 3:00 p.m.</p> <p>International Rice Festival Building 717 W. Mill St. Crowley 70526 (337) 788-7507 Monday November 16th, 2009 9:00 a.m. – 3:00 p.m.</p>
--	--	--

<p>Ville Platte Northside Civic Center 704 N. Solieu St. Ville Platte 70586 (337) 363-1135 Thursday November 12th, 2009 9:00 a.m. – 3:00 p.m.</p> <p>Opelousas Fire Department 1334 S. Union St. Opelousas 70570 (337) 948-0220 Wednesday November 18th, 2009 9:00 a.m. – 3:00 p.m.</p> <p>St. Therese Family Center 100 N. Leonard St. Abbeville 70510 (337) 893-1443 Wednesday November 18th, 2009 9:00 a.m. – 3:00 p.m.</p>	<p>Region 5 Allen Parish Health Unit 145 Hospital Drive P.O. Box 1121 Oakdale, LA 71463-1121 (338) 335-1147 Tuesday November 17th, 2009 9:00 a.m. – 5:30 p.m.</p> <p>Beauregard Parish Health Unit 216 Evangeline St. P.O. Box 327 Deridder, LA 70634 (337) 463-4486 Friday November 20th, 2009 9:00 a.m. – 5:30 p.m.</p> <p>Cacasiaeu Parish Health Unit 3236 Kirkman St. Lake Charles, LA 70601 (337) 478-6020 Friday November 13th, 2009 10:00 a.m. – 5:30 p.m.</p> <p>Cacasiaeu Parish Health Unit 201 Edgar St. Sulphur, LA (337) 478-6020 Friday November 13th, 2009 10:00 a.m. – 5:30 p.m.</p>	<p>Jefferson Davis Parish Health Unit 403 Baker St. Jennings, LA 70546 (337) 824-2193 Monday November 16th, 2009 8:00 a.m. – 5:30 p.m.</p> <p>Grandlake Recreation Center 108 Recreation Ln. Grand Lake, LA 70607 (337) 475-3200 (OPH Region 5 Office) Thursday November 19th, 2009 9:00 a.m. – 2:00 p.m.</p>
---	--	---

<p>Region 6 Avoyelles Parish Health Unit 657 Government St. Marksville, LA 71351 (338) 253-4528 Friday November 13th, 2009 9:00 a.m. – 2:00 p.m.</p> <p>Concordia Parish Health Unit 905 Mickey Gilley Ferriday, LA 71334 (338) 757-8832 Thursday November 19th, 2009 9:00 a.m. – 2:00 p.m.</p> <p>LaSalle Parish Health Unit 1673 N. 2nd St. Jena, LA 71343 (338) 992-4842 Tuesday November 17th, 2009 9:00 a.m. – 2:00 p.m.</p> <p>Rapides Parish Health Unit 5504 "A" Coliseum Blvd. Alexandria, LA 71303 (338) 487-5282</p>	<p>Vernon Parish Health Unit 406 W. Ferritta Blvd. Leesville, LA 71496 (337) 238-6410 Monday November 16th, 2009 9:00 a.m. – 2:00 p.m.</p> <p>Winn Parish Health Unit 301 W. Main St., Ste. 101 Winfield, LA 71483 (338) 628-2148 Wednesday November 18th, 2009 9:00 a.m. – 2:00 p.m.</p> <p>Harrisonburg Elementary (Auditorium behind school) 505 Bushley Street Harrisonburg, LA 71340 (338) 487-5262 (OPH Region 6 Office) Thursday November 19th, 2009 9:00 a.m. – 2:00 p.m.</p> <p>Grant Parish Civic Center 420 Richardson Dr. Coffax, LA 71471 (338) 487-5262 (OPH Region 6 Office) Friday November 20th, 2009 9:00 a.m. – 2:00 p.m.</p>	<p>Region 7 Bienville Parish Health Unit 1285 Pine St., Ste. 102 Arcade, LA 71301 (338) 263-2125 Monday November 16th, 2009 10:00 a.m. – 6:00 p.m.</p> <p>Bossier Parish Health Unit 3022 Old Minden Rd. Bossier City, LA 71112 (338) 741-7314 Wednesday November 18th, 2009 10:00 a.m. – 6:00 p.m.</p> <p>Caddo Parish Health Unit 1035 Creswell Ave. Shreveport, LA 71101 (338) 676-5222 Wednesday November 18th, 2009 10:00 a.m. – 6:00 p.m.</p> <p>Claiborne Parish Health Unit 624 W. Main St. Homer, LA 71040 (338) 927-6127 Tuesday November 17th, 2009 10:00 a.m. – 6:00 p.m.</p>
---	--	--

<p>DeSoto Parish Health Unit 113 Jefferson Mansfield, LA 71052 (318) 872-0472 Monday November 16th 2009 10:00 a.m. – 6:00 p.m.</p>	<p>Webster Parish Health Unit 1200 Homer Rd. Minden, LA 71055 (318) 371-3044 Friday November 20th 2009 10:00 a.m. – 6:00 p.m.</p>	<p>Region 8 Caldwell Parish Health Unit 501 Collins Rd. Columbia, LA 71418 (318) 649-2393 Friday November 20th 2009 9:00 a.m. – 6:00 p.m.</p>	<p>Lincoln Parish Health Unit 405 E. Georgia Ave. Ruston, LA 71270 (318) 251-4120 Friday November 20th 2009 9:00 a.m. – 6:00 p.m.</p>
<p>Natchitoches Parish Health Unit 625 Bienville St. Natchitoches, LA 71457 (318) 357-3132 Friday November 20th 2009 10:00 a.m. – 6:00 p.m.</p>	<p>Webster Parish Health Unit 110 June Anthony Dr Springhill, LA 71075 (318) 539-4314 Thursday November 19th 2009 10:00 a.m. – 6:00 p.m.</p>	<p>East Carroll Parish Health Unit 407 Second St. Lake Providence, LA 71254 (318) 559-2012 Friday November 20th 2009 9:00 a.m. – 6:00 p.m.</p>	<p>Madison Parish Health Unit 606 Snyder St. Tallulah, LA 71282-3884 (318) 574-3311 Friday November 20th 2009 9:00 a.m. – 6:00 p.m.</p>
<p>Red River Parish Health Unit 2015 Red Oak Rd. Coushatta, LA 71019 (318) 932-4087 Tuesday November 17th 2009 10:00 a.m. – 6:00 p.m.</p>	<p>Franklin Parish Health Unit 6614 Main St. Winniboro, LA 71295 (318) 435-2143 Friday November 20th 2009 9:00 a.m. – 6:00 p.m.</p>	<p>Morehouse Parish Health Unit 630 School Rd. Bastrop, LA 71220 (318) 283-0806 Friday November 20th 2009 9:00 a.m. – 6:00 p.m.</p>	<p>Union Parish Health Unit 1002 Marion Hwy. Farmerville, LA 71241 (318) 368-3156 Friday November 20th 2009 9:00 a.m. – 6:00 p.m.</p>
<p>Sabine Parish Health Unit 1230 W. Louisiana Ave. Many, LA 71449 (318) 256-4105 Thursday November 19th 2009 10:00 a.m. – 6:00 p.m.</p>	<p>Jackson Parish Health Unit 228 Bond St. Jonesboro, LA 71251 (318) 259-6601 Friday November 20th 2009 9:00 a.m. – 6:00 p.m.</p>	<p>Quachita Parish Health Unit 1650 DeSard St. Monroe, LA 71201 (318) 361-7281 Friday November 20th 2009 9:00 a.m. – 6:00 p.m.</p>	<p>West Carroll Parish Health Unit 402 Beale St. Oak Grove, LA 71263 (318) 428-9361 Friday November 20th 2009 9:00 a.m. – 6:00 p.m.</p>

<p>Richland Parish Health Unit 21 Lynn Gayle Robertson Road Rayville, LA 71269 (318) 728-4441 Friday November 20th 2009 9:00 a.m. – 6:00 p.m.</p>	<p>Region 9 Livingston Parish Health Unit 20399 Government Blvd. Livingston, LA 70754 (225) 686-7017 Friday November 20th 2009 8:30 a.m. – 3:00 p.m.</p>	<p>Washington Parish Health Unit (Franklinton) 1104 Bene St. Franklinton, LA 70438 (985) 839-5646 Friday November 20th 2009 8:30 a.m. – 3:00 p.m.</p>
<p>Tensas Parish Health Unit 1115 Levee St. St. Joseph, LA 71366 (318) 766-3515 Friday November 20th 2009 9:00 a.m. – 6:00 p.m.</p>	<p>St. Tammany Parish Health Unit 105 Medical Center Drive, Suite 101 Slidell, LA 70461 (985) 646-6445 Friday November 20th 2009 8:30 a.m. – 3:00 p.m.</p>	<p>Washington Parish Health Unit (Bogalusa) 626 Carolina Ave Bogalusa, LA 70427 (985) 732-6615 Friday November 20th 2009 8:30 a.m. – 3:00 p.m.</p>
<p>Union Parish Health Unit 1002 Marion Hwy. Farmerville, LA 71241 (318) 368-3156 Friday November 20th 2009 9:00 a.m. – 6:00 p.m.</p>	<p>Tangipahoa Parish Health Unit 15481W. Club Deluxe Rd. Hammond, LA 70403 (985) 543-4165 Friday November 20th 2009 8:30 a.m. – 3:00 p.m.</p>	<p>St. Helena Health Unit 53 N. 2nd St. Greensburg, 70445 (225) 222-6175 Friday November 20th 2009 8:30 a.m. -3:00 p.m.</p>
<p>West Carroll Parish Health Unit 402 Beale St. Oak Grove, LA 71263 (318) 428-9361 Friday November 20th 2009 9:00 a.m. – 6:00 p.m.</p>	<p>Tangipahoa Parish Health Unit 139 West Oak St. Amite, LA 70422 (985) 748-2020 Friday November 20th 2009 8:30 a.m. – 3:00 p.m.</p>	



H1N1 Vaccination Plan

H1N1 Vaccine Priority Groups

- **Identified Priority Groups:**
 - Pregnant women
 - Household contacts and caregivers for children < 6 months of age
 - Healthcare and emergency medical services personnel
 - All people from 6 months through 24 years of age
 - Persons aged 25 through 64 years who have health conditions associated with higher risk of medical complications from influenza.

(Groups listed above include approximately 159 million people in the US)
- **Strategy:** Continue to vaccinate unimmunized patients and not keep vaccine in reserve for later administration of the second dose. Novel H1N1 vaccine is intended to be used along with seasonal flu vaccine to protect people

H1N1 Vaccination – Concept of Operations (CONOPS)

PHASE 1: Develop (register) and Evaluate Target Group:

- Review registrant list for completeness within categories.
- Identify gaps in registrant list.
- Targeted intervention to gaps in list to bolster delivery to target groups / specific providers.
- Send out another communication with "closeout" date for registrant list (**October 2, 2009**).

PHASE 2: Training on LINKS:

LINKS trainings begin week of Sept 21st, one day next week, then 2 days/week through December.

25

H1N1 Vaccination – Concept of Operations CONOPS

PHASE 3: Operations

Infrastructure: Hire staff in Immunization Section to distribute to low-volume providers (<100 doses) for unloading, storage, shipping, handling pending grant approval.

Distribution Methodology:

Allocation Model: allocate initial batch of vaccine using VFC model, which balances target groups, high volume providers, demographics on registration, demographics of Parish, size of provider, ability to receive/administer, etc. High risk people go first then "spreader-group"

Large volume providers distributed by: McKesson

Small volume providers distributed by: OPH Immunization Section

Rate/Frequency: frequency of when batches will be released by manufacturers to the state is TBD.

Operations Calibration Techniques:

Continue to Monitor provider usage on LINKS.

Allocate future batches to high volume users, target group providers, and specific outreach efforts (strike teams).

As specific providers slow delivery, send to registered providers who have received none/little to expand campaign.

Continue the process of vaccine utilization monitoring, target group prioritization, provider expansion and delivery until campaign is over.

26

Current Status of H1N1 Vaccine Distributors Registered: Regions 1 - 3

Organization Type	1		2		3	
	Count of Organization Type	Sum of Max initial vaccine order	Count of Organization Type	Sum of Max initial vaccine order	Count of Organization Type	Sum of Max initial vaccine order
Community Vaccinator	1	4027			1	40
Corrections Dept.	4	2517	5	5211	2	150
Family Practice	41	18880	41	22959	16	5510
FQHC / Rural Health	6	10602	14	2420	17	38420
Hospital - Military						
Hospital - Private	16	26502	12	11710	6	2303
Hospital - Public	4	37502	9	15165	8	25540
Indian Health Services						
Military	2	3000	1	500		
Nursing Home	11	3100	10	3818	12	1844
Other	28	10290	11	4115	12	3443
Other-Private	99	30943	63	73483	40	15484
Other-Public	5	9938				
Parish Health Unit	2	2700				
Pediatrics	51	11115	29	14069	12	3010
Pharmacy	55	11718	34	15840	17	22700
Private - Cardiology						
Private - Internal Medicine	13	9620	3	2978	1	50
Private - Urgent Care Clinic	3	2000	0	2100		
Private-OB/GYN	15	2005	5	5058	7	1152
Public	1	200				
School/College/University	7	8250	3	12660	2	12170
School-Private	2	5540				
School-Public	4	1100	5	2100	2	7000
Grand Total	174	654288	257	213043	155	139450

Source: Immunization Section data of Oct 2, 2009

27

Current Status of H1N1 Vaccine Distributors Registered: Regions 4 - 6

Organization Type	4		5		6	
	Count of Organization Type	Sum of Max initial vaccine order	Count of Organization Type	Sum of Max initial vaccine order	Count of Organization Type	Sum of Max initial vaccine order
Community Vaccinator			1	250		
Corrections Dept.	2	1250	3	2000	3	3800
Family Practice	35	9250	17	8050	20	9895
FQHC / Rural Health	12	3330	5	1400	8	1539
Hospital - Military						
Hospital - Private	16	7570	6	1700	9	4865
Hospital - Public	12	12895	10	14000	12	22070
Indian Health Services						
Military			1	1000		
Nursing Home					1	7600
Other	20	3113	11	1650	20	3429
Other-Private	19	3920	8	2310	7	1605
Other-Public	60	26860	30	17070	31	30799
Other Public	1	439				
Parish Health Unit	3	675				
Pediatrics	26	8910	8	2400	16	3840
Pharmacy	41	50465	21	35500	14	16780
Private - Cardiology	1	25				
Private - Internal Medicine	5	600	1	215	2	70
Private - Urgent Care Clinic	3	1200				
Private-OB/GYN	5	1380	7	1875	3	330
Public					1	190
School/College/University			1	200	3	24800
School-Private						
School-Public	2	1300			2	1700
Grand Total	265	139668	142	104015	155	143464

28

Current Status of H1N1 Vaccine Distributors Registered: **Regions 7 - 9**

Organization Type	7		8		9	
	Count of Organization Type	Sum of Max initial vaccine order	Count of Organization Type	Sum of Max initial vaccine order	Count of Organization Type	Sum of Max initial vaccine order
Community Vaccinator						
Connections Dept.	5	2416	1	96	1	1600
Family Practice	41	24232	29	16818	22	14125
FQHC / Rural Health	13	4636	18	5390	8	3300
Hospital - Military						
Hospital - Private	18	3244	7	1555	9	4275
Hospital - Public	7	34720	18	35500	12	20625
Indian Health Services						
Military	1	2504				
Nursing Home	37	6101	19	3139	15	2840
Other	15	1803	27	2948	11	1673
Other-Private	78	21664	47	15619	50	13176
Other-Public			1	366		
Parish Health Unit						
Pediatrics	19	7725	8	3576	25	19750
Pharmacy	24	41310	9	13500	28	47340
Private - Cardiology						
Private - Internal Medicine	3	600			1	900
Private - Urgent Care Clinic	2	1600			1	300
Private-OB/GYN	9	1820	4	2750	5	1050
Public						
School/College/University			2	2000		
School-Private	1	100				
School-Public	5	100	7	1650	7	5600
Grand Total	278	150058	197	88754	195	136406

Current Status of H1N1 Vaccine Distributors Registered: **State**

Organization Type	Total Count of Organization Type	Total Sum of Max initial vaccine order
Community Vaccinator	3	4247
Connections Dept.	26	19156
Family Practice	216	129344
FQHC / Rural Health	101	48524
Hospital - Military	1	10000
Hospital - Private	96	67550
Hospital - Public	92	198051
Indian Health Services	1	1000
Military	1	14000
Nursing Home	168	28410
Other	138	31513
Other-Private	508	174469
Other-Public	7	6518
Parish Health Unit	1	3375
Pediatrics	19	74378
Pharmacy	248	414961
Private - Cardiology	1	25
Private - Internal Medicine	26	14850
Private - Urgent Care Clinic	12	6280
Private-OB/GYN	60	17300
Public	1	400
School/College/University	18	60000
School-Private	4	5940
School-Public	18	38670
Grand Total	2118	1761817

Antiviral Update

Background: As you may recall, 25% of the Strategic National Stockpile antiviral cache was distributed in April – May 2009 to hospitals, nursing homes, Federally Qualified Health Centers (FQHC), and other medical institutions. Protocols on the use of the antiviral cache was provided in a letter outlining risk groups.

Two efforts are currently unfolding:

1. Protocols on the use of the antiviral cache for the uninsured or underinsured are enclosed. The letter is intended for the target audience of medical facilities that received a portion of the antiviral cache in April – May 2009. See Attachment 1.
2. OPH is distributing some of the state's antiviral cache to pharmacies so as to supplement the readily-available retail supplies but will directly assist with uninsured or underinsured vulnerable populations. The Pharmacy effort is explained below. The Office of Public Health (OPH) has solicited the Board of Pharmacy's assistance. In particular, OPH intends to establish a network of community pharmacies that wish to participate in the dispensing of antiviral medications from the State's stockpile to certain indigent patients. Pharmacies electing to participate must execute a Memorandum of Understanding (MOU) and then return that MOU to OPH in New Orleans – no later than Wednesday, September 30. OPH will then establish the participating network and allocate the antivirals to the network pharmacies for dispensing under the terms of the MOU.

Antiviral medication from the state cache and the Strategic National Stockpile (SNS) will be distributed within Louisiana to interested pharmacies, with considerations given to population density as well as poverty by zip code. This medication is intended to supplement the readily-available retail supplies, and will cover specific vulnerable populations such as the **uninsured or underinsured** that have limited or no access due to financial constraints.

The distribution of this antiviral medication cache to local pharmacies will occur throughout October 2009. LINKS will be used to record patient information and to track antiviral inventory.